

Bloomington Convention Center Art Recommendation



May 20, 2026

Contributing Members

A John Rose
Jennifer Mujezinovic
Malcolm Abrams
Talisha Coppock
Steve Versaw
Chad Rabinovitz
Karen Jepson-Innes
Dallas Evans
Natalia Almanza
Miah Michaelsen
Christina Elem

Adam Thies
Joyce Poling
Rob Shakespeare
Bloomington Arts Commission
John Whitehart & the Capital Improvement Board
Mike McAfee & Visit Bloomington
Jane Kupersmith
Eddie Layton
Andrew Scere
Holly Warren

One Percent for the Arts



Timeline

Sept. 2025

Public feedback sessions to gather information on what the community wants from the project

Oct. - Nov. 2025

Call for Artists open

Dec. 2025

Finalists notified and began work on proposals

Apr. 10, 2026

Final proposals received

Apr. - May 2026

Finalists interviews + public feedback session

May 20, 2026

Artist recommendation to CIB



Kipp Kobayashi | Racing with Clouds



Jason Bruges Studio | Digital Tapestry



Ball-Nogues Studio | A Form of Connection



Hou de Sousa | Petals

Recommendation:

A Form of Connection | Ball Nogues Studio

May 20, 2026











Inter-Team Workflow and Deliverables

Design Development :

- Design Development and Documents
- Mock-up Testing
- Finalize Design
- Final Design Approvals

Construction Documents

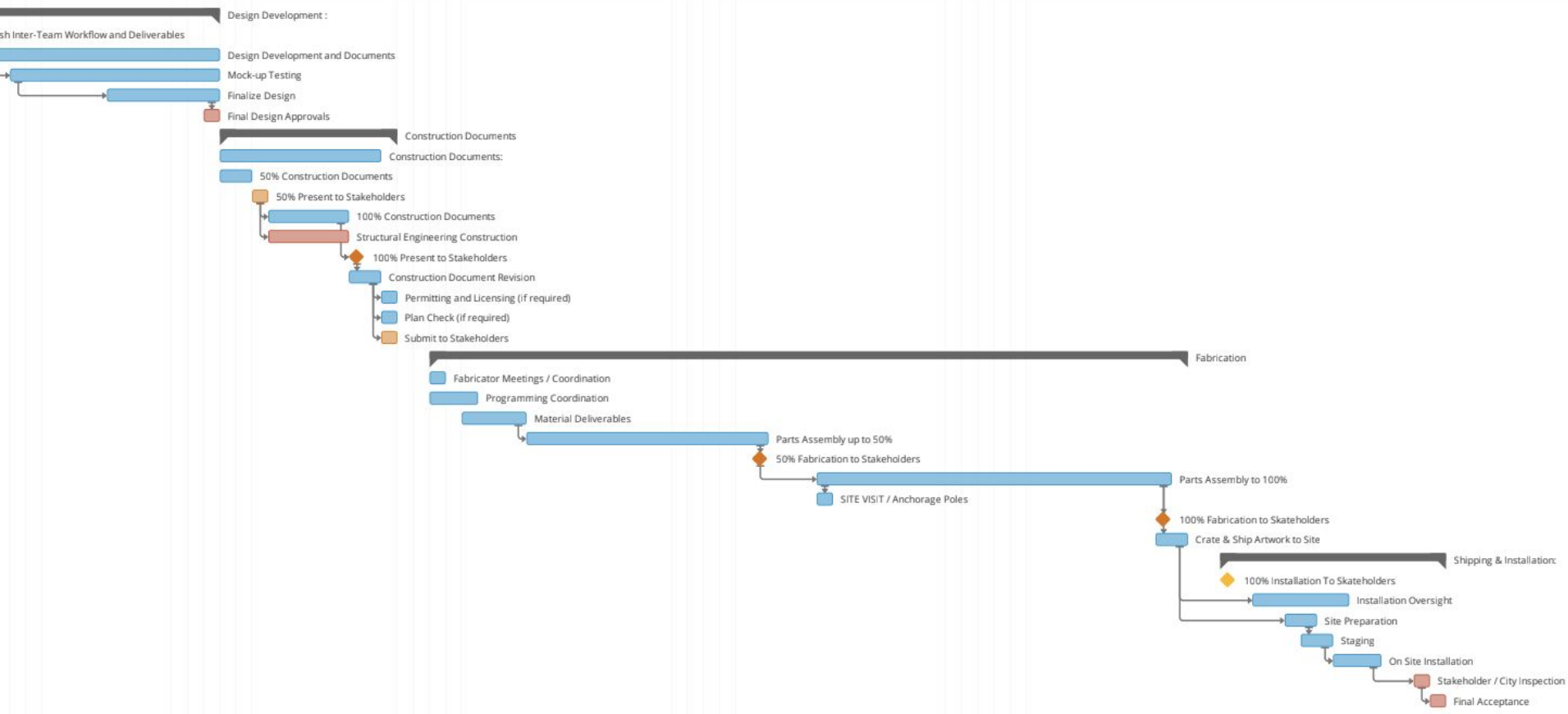
- Construction Documents:
- 50% Construction Documents
- 50% Present to Stakeholders
- 100% Construction Documents
- Structural Engineering Construction
- 100% Present to Stakeholders
- Construction Document Revision
- Permitting and Licensing (if required)
- Plan Check (if required)
- Submit to Stakeholders

Fabrication

- Fabricator Meetings / Coordination
- Programming Coordination
- Material Deliverables

- Parts Assembly up to 50%
- 50% Fabrication to Stakeholders
- SITE VISIT / Anchorage Poles
- Parts Assembly to 100%

- 100% Fabrication to Stakeholders
- Crate & Ship Artwork to Site
- Shipping & Installation:
- 100% Installation To Stakeholders
- Installation Oversight
- Site Preparation
- Staging
- On Site Installation
- Stakeholder / City Inspection
- Final Acceptance



Bloomington CC Public Artwork - Preliminary Budget

\$400,000

GENERAL EXPENSES

| | |
|---------------------------------------------------------------------------------|----------|
| Modeling, Drafting, and Management – Senior PM Staff, Modeling, Drafting, Admin | \$17,000 |
| Professional Consultant Fees - Engineer, Conservator | \$8,000 |
| Expenses - Travel | \$12,500 |
| Insurance (WC, liability, business auto, umbrella) Fine Art Insurance | \$8,250 |
| Full Scale Mock Up, Models (Digital & or Physical), | \$500 |

DESIGN FEE

| | |
|-----------------------------------------------------------------------------|----------|
| Oversight during Design Development, Meetings, Fabrication and Installation | \$60,000 |
|-----------------------------------------------------------------------------|----------|

FABRICATION

| | |
|---------------------------------------------------------------------------|----------|
| Labor – Senior PM Staff, Shop Tech, Subcontractors, Welders, ShopDrawings | \$94,000 |
| Materials – Aluminum Plate, Steel Tube, Hardware, Powder Coating | \$69,500 |
| Space Rental and Storage – If additional space is needed | \$5,250 |
| Tools and Equipment Purchases and Rental | \$3,000 |

INSTALLATION

| | |
|---------------------------------------------------------------|----------|
| Shipping | \$12,000 |
| Installation Labor – Senior Staff, Shop Tech, Subcontractors, | \$52,000 |
| Site Preparation – Landscape / Hardscape Protection | \$6,000 |
| Equipment Rental | \$12,000 |

CONTINGENCY 10%

\$40,000

Total Budget \$400,000

BNS Hourly Rates 1/2026

| | | | | | |
|------------------------|-------|-----------------|-------|----------|-------|
| Benjamin Ball (Artist) | \$215 | Senior Designer | \$143 | Designer | \$110 |
| Senior PM Staff | \$182 | Shop Tech | \$83 | Admin | \$72 |

Thank you

