

# Accessibility Evaluation

## Monroe County Polling Location



**Academy**  
**444 S Patterson Dr**  
**Bloomington, IN 47403**

**Inspection Date: 03/26/2026**  
**Inspectors: Michael Shermis**

Prepared By  
**Monroe County**  
**(916) 473 - 9444**

**Report Date: 04/07/2026**

***Table of Contents***

---

<b>Findings</b>	.....	<b>3</b>
<b>Interior</b>	.....	<b>3</b>
<b>Restrooms</b>	.....	<b>3</b>

## Interior: Restrooms

### Finding: 1

There is insufficient turning space within this room or space. A Circular space or a T-shaped space must be provided.

Turning space shall either be a 60" Circular Space or T-Shaped Space. Doors cannot swing into this space by more than 12 inches

**Circular Space.** The turning space shall be a space of 60 inches diameter minimum. The space shall be permitted to include knee and toe clearance.

**T-Shaped Space.** The turning space shall be a T-shaped space within a 60 inch square minimum with arms and base 36 inches wide minimum. Each arm of the T shall be clear of obstructions 12 inches minimum in each direction and the base shall be clear of obstructions 24 inches minimum. The space shall be permitted to include knee and toe clearance.

*2010 ADAS Section 304.3.1*

*The turning space shall be a space of 60 inches (1525 mm) diameter minimum. The space shall be permitted to include knee and toe clearance complying with 306.*

*2010 ADAS Section 304.3.2*

*The turning space shall be a T-shaped space within a 60 inch (1525 mm) square minimum with arms and base 36 inches (915 mm) wide minimum. Each arm of the T shall be clear of obstructions 12 inches (305 mm) minimum in each direction and the base shall be clear of obstructions 24 inches (610 mm) minimum. The space shall be permitted to include knee and toe clearance complying with 306 only at the end of either the base or one arm.*

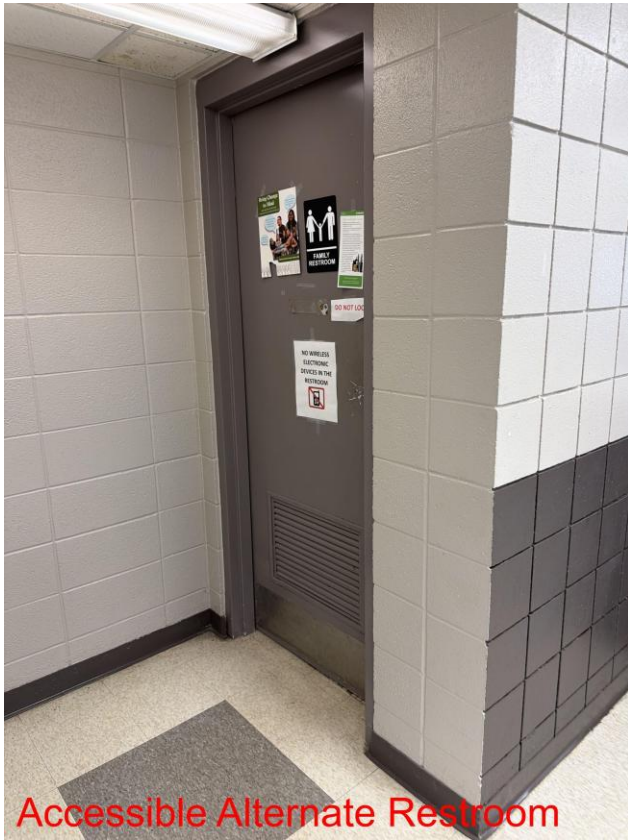
### Citation:

2010 ADAS Section: 304.3.1, 304.3.2

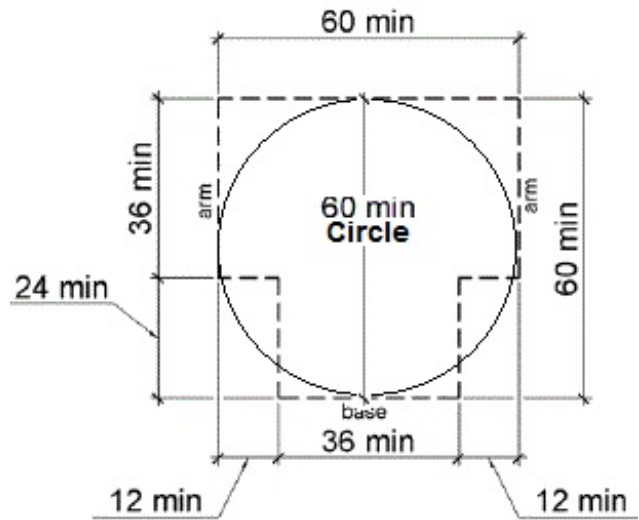
### Recommendation:

Add signage directing voters with disabilities to the accessible restroom by the nurse's office.

Finding: 1 (Continued)



Accessible Alternate Restroom



## Interior: Restrooms

### Finding: 2

A compliant room identification sign is missing on the strike side of the door.

Wall signs identifying permanent rooms and spaces of a building shall be a horizontal format and the characters raised 1/32 inch minimum and shall be sans serif uppercase characters a minimum of 5/8 inch and a maximum of 2 inches high. Contracted Grade 2 Braille shall be in a horizontal format and shall be placed a minimum of 3/8 inch and a maximum of 1/2 inch directly below the tactile characters; flush left or centered. Signs with raised characters or Braille shall be located 48 inches minimum above the finish floor or ground surface, measured from the baseline of the lowest tactile character and 60 inches maximum above the finish floor or ground surface, measured from the baseline of the highest tactile character.

2010 ADAS Section 216.2

Interior and exterior signs identifying permanent rooms and spaces shall comply with 703.1, 703.2, and 703.5. Where pictograms are provided as designations of permanent interior rooms and spaces, the pictograms shall comply with 703.6 and shall have text descriptors complying with 703.2 and 703.5.

### Citation:

2010 ADAS Section: 216.2

### Recommendation:

If feasible, move the compliant restroom signage to the strike side of the door.

