

Accessibility Evaluation

Monroe County Polling Location



**Election Central
501 N Morton St
Bloomington, IN 47404**

Inspection Date: 03/16/2026

Inspectors: Michael Shermis, Annabelle Vosmeier

**Prepared By
Monroe County
(916) 473 - 9444**

Report Date: 04/06/2026

Table of Contents

Findings	3
Exterior	3
Parking	3
Doors	5
Interior	6
Doors	6
Restrooms	7
Voting Area	9

Exterior: Parking

Finding: 1

The striping for the accessible parking space is dilapidated and in need of repair and/or maintenance.

2010 ADAS Section 502.2

Car parking spaces shall be 96 inches (2440 mm) wide minimum and van parking spaces shall be 132 inches (3350 mm) wide minimum, shall be marked to define the width, and shall have an adjacent access aisle complying with 502.3.

2010 ADAS Section 502.2 Exception

Van parking spaces shall be permitted to be 96 inches (2440 mm) wide minimum where the access aisle is 96 inches (2440 mm) wide minimum.

Citation:

2010 ADAS Section: 502.2, 502.2 Exception

Recommendation:

Add cones and strings with flags to mark the accessible spaces and access aisles.



Finding: 1 Additional Finding Photos



Exterior: Doors

Finding: 2

The door contains multiple violations.

The door contains some or all of the following: missing 10 inch smooth surface at the bottom of the door, missing required maneuvering clearances, excessive opening force, noncompliant closing speed, noncompliant hardware, noncompliant vision light, and/or insufficient clear width.

2010 ADAS Section 206.5.2

Within a building or facility, at least one door, doorway, or gate serving each room or space complying with these requirements shall comply with 404.

2010 ADAS Section 404.1

Doors, doorways, and gates that are part of an accessible route shall comply with 404.

Citation:

2010 ADAS Section: 206.5.2, 404.1

Recommendation:

This door is too heavy, requires keyfob access, and is not equipped with an automatic door opener. Recommend propping door open during voting.



Interior: Doors

Finding: 3

The door exceeds the maximum allowable opening force.

Interior doors shall have a maximum opening force of 5 pounds.

These forces do not apply to the force required to retract latch bolts or disengage other devices that hold the door or gate in a closed position.

2010 ADAS Section 404.2.9

Fire doors shall have a minimum opening force allowable by the appropriate administrative authority. The force for pushing or pulling open a door or gate other than fire doors shall be as follows: 1. Interior hinged doors and gates: 5 pounds (22.2 N) maximum. 2. Sliding or folding doors: 5 pounds (22.2 N) maximum. These forces do not apply to the force required to retract latch bolts or disengage other devices that hold the door or gate in a closed position.

Citation:

2010 ADAS Section: 404.2.9

Recommendation:

Recommend propping door open during voting.



Interior: Restrooms

Finding: 4

The coat hook is installed greater than 48 inches above the finished floor.

Where a forward reach is unobstructed, the high forward reach shall be 48 inches maximum above the finished floor.

2010 ADAS Section 308.2.1

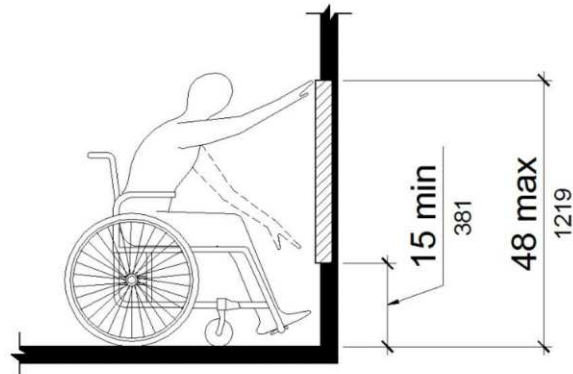
Where a forward reach is unobstructed, the high forward reach shall be 48 inches (1220 mm) maximum and the low forward reach shall be 15 inches (380 mm) minimum above the finish floor or ground.

Citation:

2010 ADAS Section: 308.2.1

Recommendation:

Lower coat hooks in both men's and women's restrooms.



Interior: Restrooms

Finding: 5

The paper towel dispenser's operation mechanism is too high off the floor.

Dispensers must have all operable parts a maximum of 48 inches above the floor.

2010 ADAS Section 308.2.1

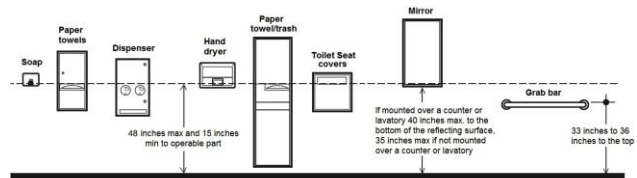
Where a forward reach is unobstructed, the high forward reach shall be 48 inches (1220 mm) maximum and the low forward reach shall be 15 inches (380 mm) minimum above the finish floor or ground.

Citation:

2010 ADAS Section: 308.2.1

Recommendation:

Lower paper towel dispenser in men's restroom or place a basket of paper towels near the sink.



Interior: Voting Area

Finding: 6

The top of the table surface is not within the compliant height range.

The tops of tables and counters must be 28 inches to 34 inches from the floor or ground.

2010 ADAS Section 902.3

The tops of dining surfaces and work surfaces shall be 28 inches (710 mm) minimum and 34 inches (865 mm) maximum above the finish floor or ground.

Citation:

2010 ADAS Section: 902.3

Recommendation:

Provide a private, screened area for voting at a standard-height table or an accessible Franklin booth.

