

Accessibility Evaluation

Monroe County Polling Location



Family Life Church
8449 N Fox Hollow Rd
Bloomington, IN 47408

Inspection Date: 03/13/2026
Inspector: Chris Jackson

Prepared By
Monroe County
(916) 473 - 9444

Report Date: 03/27/2026

Table of Contents

Findings 3

Exterior 3

Parking 3

Interior 4

Restrooms 4

Exterior: Parking

Finding: 1

Parking space identification signs shall include the International Symbol of Accessibility. Signs identifying van parking spaces shall contain the designation "van accessible."

2010 ADAS Section 502.6

Parking space identification signs shall include the International Symbol of Accessibility complying with 703.7.2.1. Signs identifying van parking spaces shall contain the designation "van accessible." Signs shall be 60 inches (1525 mm) minimum above the finish floor or ground surface measured to the bottom of the sign.

Citation:

2010 ADAS Section: 502.6

Recommendation:

Add temporary or permanent accessible parking signage to all three spaces, including van accessible signage for the van accessible space.



Interior: Restrooms

Finding: 2

The knee clearance is not a minimum of 27 inches above the finished floor.

The knee clearance shall be 11 inches deep minimum at 9 inches above the finish floor or ground, and 8 inches deep minimum at 27 inches above the finish floor or ground and 30 inches wide minimum.

Between 9 inches and 27 inches above the finish floor or ground, the knee clearance shall be permitted to reduce at a rate of 1 inch in depth for each 6 inches in height.

2010 ADAS Section 306.3.3

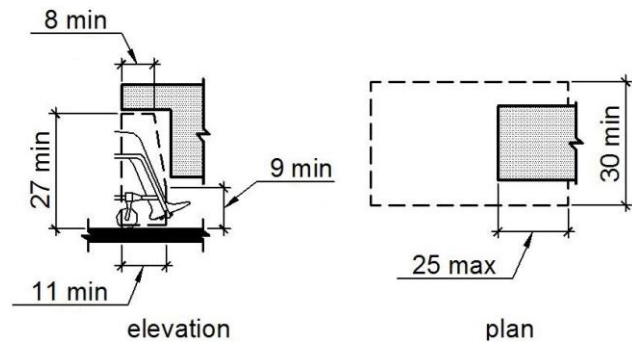
Where knee clearance is required under an element as part of a clear floor space, the knee clearance shall be 11 inches (280 mm) deep minimum at 9 inches (230 mm) above the finish floor or ground, and 8 inches (205 mm) deep minimum at 27 inches (685 mm) above the finish floor or ground.

Citation:

2010 ADAS Section: 306.3.3

Recommendation:

Place signage directing voters who need an accessible restroom to the family restroom by the gym.



Interior: Restrooms

Finding: 3

The paper towel dispenser's operation mechanism is too high off the floor.

Dispensers must have all operable parts a maximum of 48 inches above the floor.

2010 ADAS Section 308.2.1

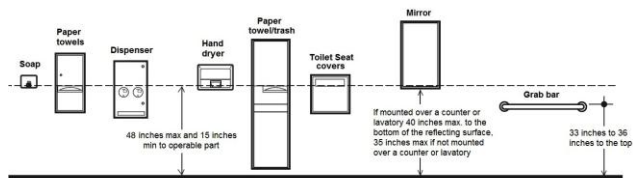
Where a forward reach is unobstructed, the high forward reach shall be 48 inches (1220 mm) maximum and the low forward reach shall be 15 inches (380 mm) minimum above the finish floor or ground.

Citation:

2010 ADAS Section: 308.2.1

Recommendation:

Lower the paper towel dispenser or place a basket of paper towels on the sink.



Interior: Restrooms

Finding: 4

A compliant room identification sign is missing on the strike side of the door.

Wall signs identifying permanent rooms and spaces of a building shall be a horizontal format and the characters raised 1/32 inch minimum and shall be sans serif uppercase characters a minimum of 5/8 inch and a maximum of 2 inches high. Contracted Grade 2 Braille shall be in a horizontal format and shall be placed a minimum of 3/8 inch and a maximum of 1/2 inch directly below the tactile characters; flush left or centered. Signs with raised characters or Braille shall be located 48 inches minimum above the finish floor or ground surface, measured from the baseline of the lowest tactile character and 60 inches maximum above the finish floor or ground surface, measured from the baseline of the highest tactile character.

2010 ADAS Section 216.2

Interior and exterior signs identifying permanent rooms and spaces shall comply with 703.1, 703.2, and 703.5. Where pictograms are provided as designations of permanent interior rooms and spaces, the pictograms shall comply with 703.6 and shall have text descriptors complying with 703.2 and 703.5.

Citation:

2010 ADAS Section: 216.2

Recommendation:

Install temporary restroom signage with accessible text and braille to the men's and women's restrooms. Add temporary signage identifying the family restroom by the gym as the accessible restroom.

