

Accessibility Evaluation

Monroe County Polling Location



**Grandview Elementary
2300 S Endwright Rd
Bloomington, IN 47403**

**Inspection Date: 03/25/2026
Inspectors: Chris Jackson**

**Prepared By
Monroe County
(916) 473 - 9444**

Report Date: 04/06/2026

Table of Contents

Findings	3
Exterior	3
Parking	3
Path of Travel	4
Interior	5
Restrooms	5

Exterior: Parking

Finding: 1

The required parking signage is missing.

There are 4 accessible spaces near the main entrance but only two have vertical signs. One of those signs is for van accessibility.

Parking space identification signs shall include the International Symbol of Accessibility (ISA). Signs identifying van parking spaces shall contain the designation "van accessible." All signs shall be 60 inches minimum above the finish floor or ground surface measured to the bottom of the sign.

2010 ADAS Section 502.6

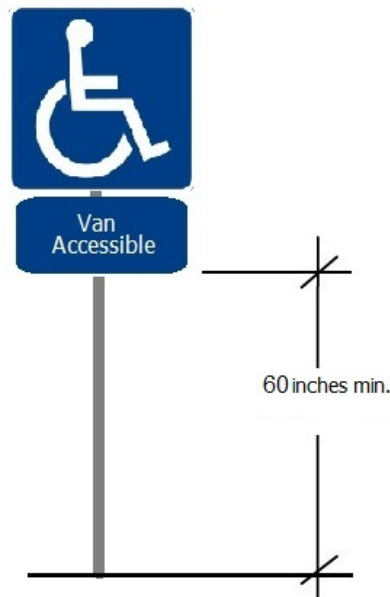
Parking space identification signs shall include the International Symbol of Accessibility complying with 703.7.2.1. Signs identifying van parking spaces shall contain the designation "van accessible." Signs shall be 60 inches (1525 mm) minimum above the finish floor or ground surface measured to the bottom of the sign.

Citation:

2010 ADAS Section: 502.6

Recommendation:

Add additional temporary accessible signage to the other two accessible spaces.



Exterior: Path of Travel

Finding: 2

The gym where voting takes place is a long distance from the accessible parking. Additionally, there's no marked accessible path from the parking across the vehicular way.

When a building, or portion of a building, is required to be accessible, an accessible route of travel shall be provided to all portions of the building, to accessible building entrances and between the building and the public way.

At least one accessible route within the boundary of the site must be provided from public transportation stops, accessible parking and accessible passenger loading zones and public streets or sidewalks to the accessible building entrance they serve.

The accessible route shall, to the maximum extent feasible, coincide with the route for the general public. At least one accessible route shall connect accessible buildings, facilities, elements and spaces that are on the same site. At least one accessible route shall connect accessible building or facility entrances with all accessible spaces and elements.

2010 ADAS Section 206.2.1

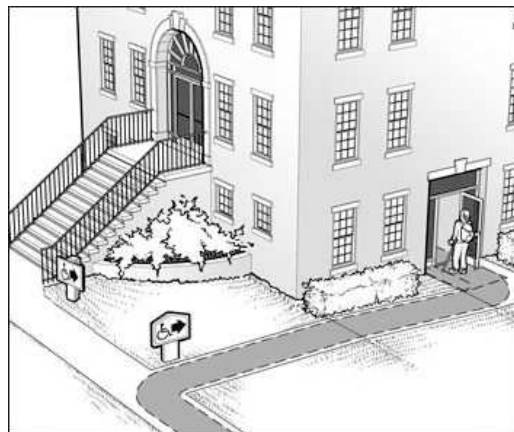
At least one accessible route shall be provided within the site from accessible parking spaces and accessible passenger loading zones; public streets and sidewalks; and public transportation stops to the accessible building or facility entrance they serve.

Citation:

2010 ADAS Section: 206.2.1

Recommendation:

Provide signage directing voters to an accessible path of travel through the front doors of the building. Although this is a long distance, there are no better alternatives for closer accessible parking.



Interior: Restrooms

Finding: 3

The men's restroom soap dispenser's operation mechanism is too high off the floor.

Dispensers must have all operable parts a maximum of 48 inches above the floor.

2010 ADAS Section 308.2.1

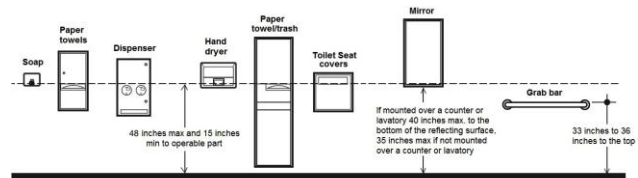
Where a forward reach is unobstructed, the high forward reach shall be 48 inches (1220 mm) maximum and the low forward reach shall be 15 inches (380 mm) minimum above the finish floor or ground.

Citation:

2010 ADAS Section: 308.2.1

Recommendation:

Recommend adding hand soap dispenser or bottle on the counter or sink.



Interior: Restrooms

Finding: 4

The two restrooms nearest the gym are around a corner.

2010 ADAS Section 216.8

Where existing toilet rooms or bathing rooms do not comply with 603, directional signs indicating the location of the nearest toilet room or bathing room complying with 603 within the facility shall be provided. Signs shall comply with 703.5 and shall include the International Symbol of Accessibility complying with 703.7.2.1. Where existing toilet rooms or bathing rooms do not comply with 603, the toilet rooms or bathing rooms complying with 603 shall be identified by the International Symbol of Accessibility complying with 703.7.2.1. Where clustered single user toilet rooms or bathing facilities are permitted to use exceptions to 213.2, toilet rooms or bathing facilities complying with 603 shall be identified by the International Symbol of Accessibility complying with 703.7.2.1 unless all toilet rooms and bathing facilities comply with 603.

Citation:

2010 ADAS Section: 216.8

Recommendation:

Recommend adding a temporary or permanent sign that indicates the direction to the closest accessible restroom and directs voters around the corner.

