

Accessibility Evaluation

Monroe County Polling Location



Highland Park Elementary
900 S Park Square Dr
Bloomington, IN 47403

Inspection Date: 03/25/2026
Inspectors: Chris Jackson

Prepared By
Monroe County
(916) 473 - 9444

Report Date: 04/07/2026

Table of Contents

Findings	3
Exterior	3
Parking	3
Path of Travel	4
Interior	5
Restrooms	5

Exterior: Parking

Finding: 1

The van stall is missing a sign identifying it as a van accessible stall and there's only one vertical sign for the three accessible spaces.

Parking space identification signs shall include the International Symbol of Accessibility. Signs identifying van parking spaces shall contain the designation "van accessible."

2010 ADAS Section 502.6

Parking space identification signs shall include the International Symbol of Accessibility complying with 703.7.2.1. Signs identifying van parking spaces shall contain the designation "van accessible." Signs shall be 60 inches (1525 mm) minimum above the finish floor or ground surface measured to the bottom of the sign.

Citation:

2010 ADAS Section: 502.6

Recommendation:

Recommend adding additional temporary or permanent accessible parking signage.



Exterior: Path of Travel

Finding: 2

The threshold is greater than 1/2 inch high. The door used for elections has an approximately 1" threshold.

The threshold at a doorway shall be no higher than 1/2 inch. Changes in level between 1/4 inch and 1/2 inch must be beveled at 1:2 or less. 1/4 inch is the maximum vertical rise.

2010 ADAS Section 404.2.5

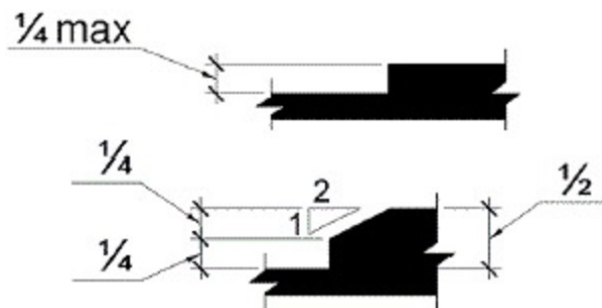
Thresholds, if provided at doorways, shall be 1/2 inch (13 mm) high maximum. Raised thresholds and changes in level at doorways shall comply with 302 and 303.

Citation:

2010 ADAS Section: 404.2.5

Recommendation:

Add a temporary or permanent threshold reducer.



Interior: Restrooms

Finding: 3

Compliant knee space has not been provided under the lavatory.

The knee clearance shall be 11 inches minimum in depth at 9 inches above the floor, and 8 inches minimum in depth at 27 inches above the floor. The top of the lavatory rim may be no higher than 34 inches.

2010 ADAS Section 306.3.1

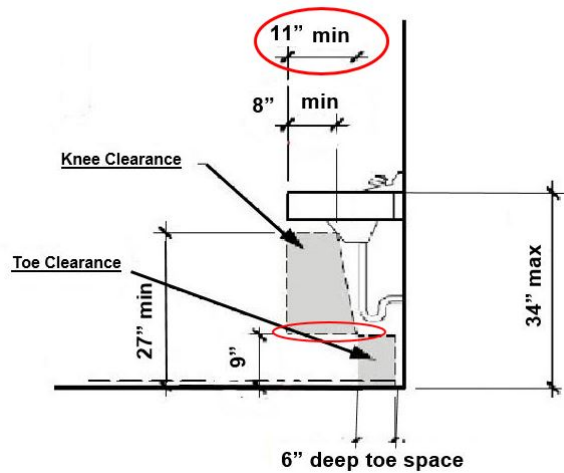
Space under an element between 9 inches (230 mm) and 27 inches (685 mm) above the finish floor or ground shall be considered knee clearance and shall comply with 306.3.

Citation:

2010 ADAS Section: 306.3.1

Recommendation:

Add signage informing voters that there is not a fully accessible restroom and directing voters with disabilities to the front of the line.



Finding: 3 Additional Finding Photos



Interior: Restrooms

Finding: 4

A compliant room identification sign is missing on the strike side of the door.

Wall signs identifying permanent rooms and spaces of a building shall be a horizontal format and the characters raised 1/32 inch minimum and shall be sans serif uppercase characters a minimum of 5/8 inch and a maximum of 2 inches high. Contracted Grade 2 Braille shall be in a horizontal format and shall be placed a minimum of 3/8 inch and a maximum of 1/2 inch directly below the tactile characters; flush left or centered. Signs with raised characters or Braille shall be located 48 inches minimum above the finish floor or ground surface, measured from the baseline of the lowest tactile character and 60 inches maximum above the finish floor or ground surface, measured from the baseline of the highest tactile character.

2010 ADAS Section 216.2

Interior and exterior signs identifying permanent rooms and spaces shall comply with 703.1, 703.2, and 703.5. Where pictograms are provided as designations of permanent interior rooms and spaces, the pictograms shall comply with 703.6 and shall have text descriptors complying with 703.2 and 703.5.

Citation:

2010 ADAS Section: 216.2

Recommendation:

Install temporary compliant signage identifying the single-user restroom in the gym.

