

# Accessibility Evaluation

## Monroe County Polling Location



**Smithville Christian Church**  
**7280 S Fairfax Rd**  
**Smithville, IN 47401**

**Inspection Date: 04/13/2026**  
**Inspectors: Michael Bird**

**Prepared By**  
**Monroe County**  
**(916) 473 - 9444**

**Report Date: 04/13/2026**

## ***Table of Contents***

---

<b>Findings</b>	.....	<b>3</b>
<b>Exterior</b>	.....	<b>3</b>
<b>Parking</b>	.....	<b>3</b>
<b>Interior</b>	.....	<b>5</b>
<b>Restrooms</b>	.....	<b>5</b>

## Exterior: Parking

### Finding: 1

The van space is missing the required van identification sign.

Parking space identification signs shall include the International Symbol of Accessibility. Signs identifying van parking spaces shall contain the designation "van accessible."

2010 ADAS Section 502.6

*Parking space identification signs shall include the International Symbol of Accessibility complying with 703.7.2.1. Signs identifying van parking spaces shall contain the designation "van accessible." Signs shall be 60 inches (1525 mm) minimum above the finish floor or ground surface measured to the bottom of the sign.*

### Citation:

2010 ADAS Section: 502.6

### Recommendation:

Add temporary or permanent accessible parking signage to the four accessible spaces. Add temporary or permanent van accessible parking signage to the space closest to the entrance.



**Finding: 1 Additional Finding Photos**



## Interior: Restrooms

### Finding: 2

The restroom is not fully compliant.

The restroom does not have the required minimum clear floor space or maneuvering clearances.

2010 ADAS Section 213.2

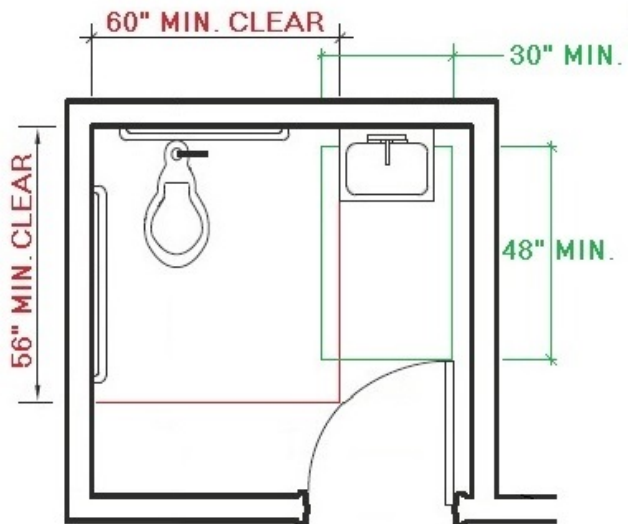
Where toilet rooms are provided, each toilet room shall comply with 603. Where bathing rooms are provided, each bathing room shall comply with 603.

### Citation:

2010 ADAS Section: 213.2

### Recommendation:

Recommend adding signage indicating that there are no accessible restrooms and directing voters with disabilities to the front of the line. Alternatively, add an accessible portable toilet in the parking lot.



## Interior: Restrooms

### Finding: 3

The restroom doors are only 30 inches wide.

The door opening does not provide at least 32 inches between the face of the door and the opposite stop.

Door openings shall provide a clear width of 32 inches minimum. Clear openings of doorways with swinging doors shall be measured between the face of the door and the stop, with the door open 90 degrees.

2010 ADAS Section 404.2.3

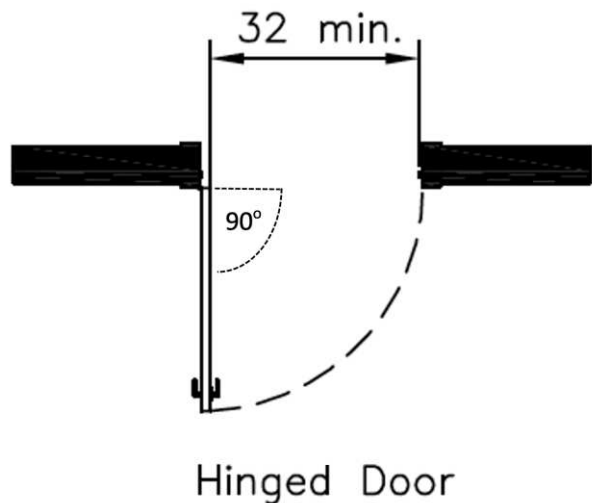
Door openings shall provide a clear width of 32 inches (815 mm) minimum. Clear openings of doorways with swinging doors shall be measured between the face of the door and the stop, with the door open 90 degrees. Openings more than 24 inches (610 mm) deep shall provide a clear opening of 36 inches (915 mm) minimum. There shall be no projections into the required clear opening width lower than 34 inches (865 mm) above the finish floor or ground. Projections into the clear opening width between 34 inches (865 mm) and 80 inches (2030 mm) above the finish floor or ground shall not exceed 4 inches (100 mm).

### Citation:

2010 ADAS Section: 404.2.3

### Recommendation:

Recommend adding signage indicating that there are no accessible restrooms and directing voters with disabilities to the front of the line. Alternatively, add an accessible portable toilet in the parking lot.



## Interior: Restrooms

### Finding: 4

A compliant room identification sign is missing on the strike side of the door.

Wall signs identifying permanent rooms and spaces of a building shall be a horizontal format and the characters raised 1/32 inch minimum and shall be sans serif uppercase characters a minimum of 5/8 inch and a maximum of 2 inches high. Contracted Grade 2 Braille shall be in a horizontal format and shall be placed a minimum of 3/8 inch and a maximum of 1/2 inch directly below the tactile characters; flush left or centered. Signs with raised characters or Braille shall be located 48 inches minimum above the finish floor or ground surface, measured from the baseline of the lowest tactile character and 60 inches maximum above the finish floor or ground surface, measured from the baseline of the highest tactile character.

2010 ADAS Section 216.2

Interior and exterior signs identifying permanent rooms and spaces shall comply with 703.1, 703.2, and 703.5. Where pictograms are provided as designations of permanent interior rooms and spaces, the pictograms shall comply with 703.6 and shall have text descriptors complying with 703.2 and 703.5.

### Citation:

2010 ADAS Section: 216.2

### Recommendation:

Install temporary compliant signage identifying the type of restroom.

